



Technical Data Sheet

Glass Membrane

Usage

- Chemicals processing (High Temperature)
- Minerals processing
- Metals processing
- Power generation and incineration: Incinerators and boilers



Filter Bags

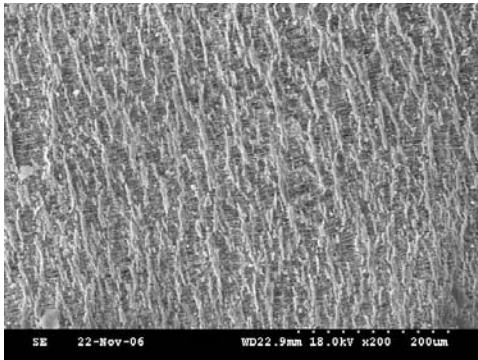
Feature

- Excellence combination of filtration efficiency, airflow and durability
- Excellence dust cake release
- Good all-round chemical and temperature resistance

Material

Glass "B" + PTFE membrane

Physical Properties



SEM Picture

Alkali Resistance	Fair
Acid Resistance	Very Good
Weight (g/m ²)	810
Thickness (mm)	1.0 +/- 0.1
Air Permeability (cm ³ /cm ² sec)	4.0 ↑
Tensile Strength (length)(kg)	200↑
Tensile Strength (Width)	180↑
Tensile Elongation (machine direction)(%)	10↓
Tensile Elongation (cross-machine direction)(kg.m ²)	5↓
Continuous Operating Temperature (°C)	260 (dry)
Maximum Surge temperature (°C)	288